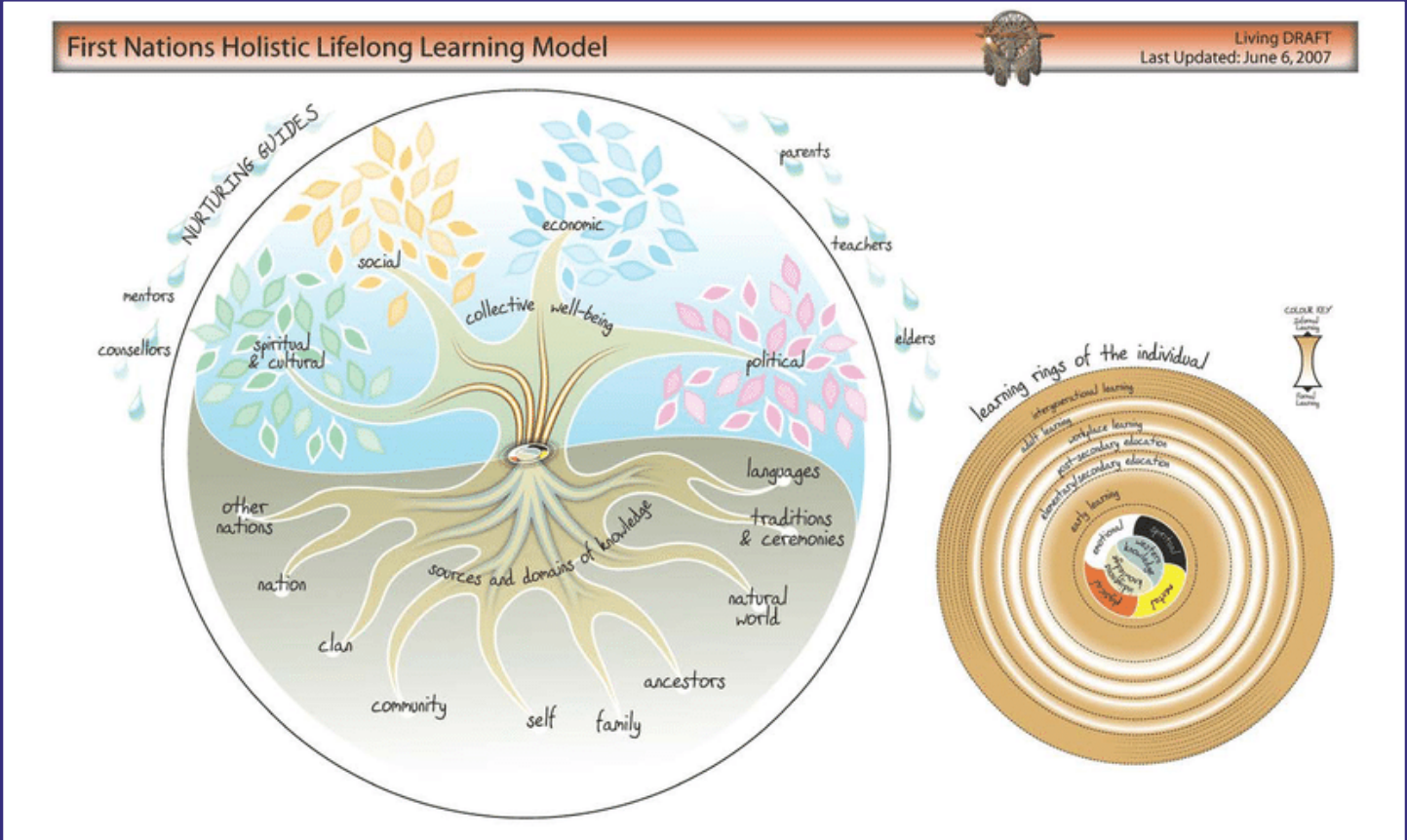


ᐱᓂᓂᑦ ᐅᓂᓂᓂᑦ ᐱᓂᓂᓂᑦ ᐱᓂᓂᓂᑦ ᐱᓂᓂᓂᑦ ᐱᓂᓂᓂᑦ ᐱᓂᓂᓂᑦ



ᐱᓂᓂᓂᑦ ᐱᓂᓂᓂᑦ ᐱᓂᓂᓂᑦ ᐱᓂᓂᓂᑦ ᐱᓂᓂᓂᑦ ᐱᓂᓂᓂᑦ
 ᐱᓂᓂᓂᑦ ᐱᓂᓂᓂᑦ ᐱᓂᓂᓂᑦ ᐱᓂᓂᓂᑦ ᐱᓂᓂᓂᑦ ᐱᓂᓂᓂᑦ
 ᐱᓂᓂᓂᑦ ᐱᓂᓂᓂᑦ ᐱᓂᓂᓂᑦ ᐱᓂᓂᓂᑦ ᐱᓂᓂᓂᑦ ᐱᓂᓂᓂᑦ
 ᐱᓂᓂᓂᑦ ᐱᓂᓂᓂᑦ ᐱᓂᓂᓂᑦ ᐱᓂᓂᓂᑦ ᐱᓂᓂᓂᑦ ᐱᓂᓂᓂᑦ
 ᐱᓂᓂᓂᑦ ᐱᓂᓂᓂᑦ ᐱᓂᓂᓂᑦ ᐱᓂᓂᓂᑦ ᐱᓂᓂᓂᑦ ᐱᓂᓂᓂᑦ
 ᐱᓂᓂᓂᑦ ᐱᓂᓂᓂᑦ ᐱᓂᓂᓂᑦ ᐱᓂᓂᓂᑦ ᐱᓂᓂᓂᑦ ᐱᓂᓂᓂᑦ
 ᐱᓂᓂᓂᑦ ᐱᓂᓂᓂᑦ ᐱᓂᓂᓂᑦ ᐱᓂᓂᓂᑦ ᐱᓂᓂᓂᑦ ᐱᓂᓂᓂᑦ
 ᐱᓂᓂᓂᑦ ᐱᓂᓂᓂᑦ ᐱᓂᓂᓂᑦ ᐱᓂᓂᓂᑦ ᐱᓂᓂᓂᑦ ᐱᓂᓂᓂᑦ

The First Nations Holistic Lifelong Learning Model, by the Canadian Council of Learning, the Aboriginal Education Research Centre and the First Nations Adult Education Consortium.

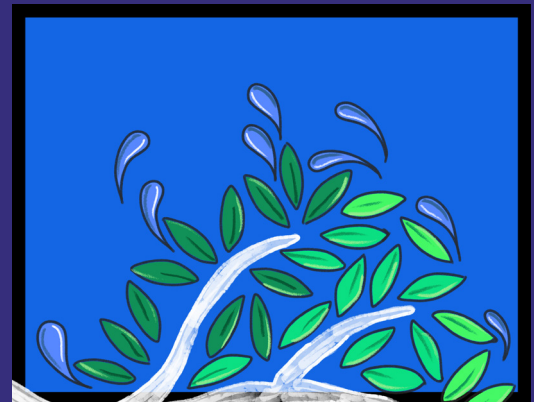
ᐊᓂᓂᓐᓂᓐ ᐅᓂᓂᓐᓂᓐ ᐱᐱᓂᓂᓐ ᓂᓂᓂᓐᓂᓐ ᐅᓂᓂᓐᓂᓐ

ᓂᓂᓐ ᐱᓂᓂᓐᓂᓐ ᐅᓂᓂᓐᓂᓐ ᐊᓂᓂᓐᓂᓐ ᐅᓂᓂᓐᓂᓐ ᐱᐱᓂᓂᓐ ᓂᓂᓂᓐᓂᓐ ᐅᓂᓂᓐᓂᓐ, ᓂᓂᓐ ᐅᓂᓂᓐᓂᓐ ᐅᓂᓂᓐᓂᓐ ᐱᓂᓂᓐᓂᓐ ᐱᓂᓂᓐᓂᓐ, ᐊᓂᓂᓐᓂᓐ ᓂᓂᓂᓐᓂᓐ ᐊᓂᓂᓐᓂᓐ ᐊᓂᓂᓐᓂᓐ ᐊᓂᓂᓐᓂᓐ ᐱᓂᓂᓐᓂᓐ.

ᓂᓂᓐ ᐱᓂᓂᓐᓂᓐ ᓂᓂᓐ ᓂᓂᓐ ᐊᓂᓂᓐᓂᓐ. ᓂᓂᓐ ᐅᓂᓂᓐᓂᓐ ᓂᓂᓂᓐᓂᓐ ᐱᓂᓂᓐᓂᓐ ᐅᓂᓂᓐᓂᓐ ᐅᓂᓂᓐᓂᓐ ᐊᓂᓂᓐᓂᓐ, ᐱᓂᓂᓐᓂᓐ ᐊᓂᓂᓐᓂᓐ ᐊᓂᓂᓐᓂᓐ ᐱᓂᓂᓐᓂᓐ ᐱᓂᓂᓐᓂᓐ ᐱᓂᓂᓐᓂᓐ.

ᐱᓂᓂᓐᓂᓐ ᐅᓂᓂᓐᓂᓐ ᓂᓂᓐ ᐱᓂᓂᓐ ᓂᓂᓐ ᓂᓂᓐ ᐊᓂᓂᓐᓂᓐ ᐊᓂᓂᓐᓂᓐ:

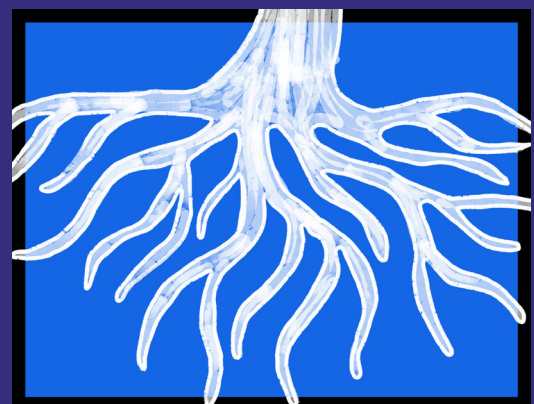
ᓂᓂᓐ ᐅᓂᓂᓐᓂᓐ:
ᓂᓂᓂᓐᓂᓐ ᐅᓂᓂᓐᓂᓐᓂᓐ



ᐊᓂᓂᓐ ᐱᓂᓂᓐᓂᓐ:
ᐅᓂᓂᓐᓂᓐ ᐅᓂᓂᓐᓂᓐ
ᐱᓂᓂᓐᓂᓐ ᐊᓂᓂᓐᓂᓐ



ᐊᓂᓂᓐ:
ᐅᓂᓂᓐᓂᓐ ᐅᓂᓂᓐᓂᓐ
ᐊᓂᓂᓐᓂᓐ ᐊᓂᓂᓐᓂᓐ ᐱᓂᓂᓐᓂᓐ
ᐊᓂᓂᓐᓂᓐ



**The Bi pi maadzing zaagidwin teg jichaaming / Circle of
Life in the Spirit of Love Project Team**

**Kim S. Daniel, PhD
Barry Isaacs, PhD
Dawn Brown
Defne Inceoglu
Judy Versegly
Christine Sawanas
Kajany Gunarajan
Louis Busch
Serena Hickers**

**Elder Consultant / Knowledge Keeper
Dorothy Elie**

**Booklet Layout and Illustrations
Defne Inceoglu**

**Oji-Cree Translation
Charles Brown**

**surreyplace.ca
aidecanada.ca**